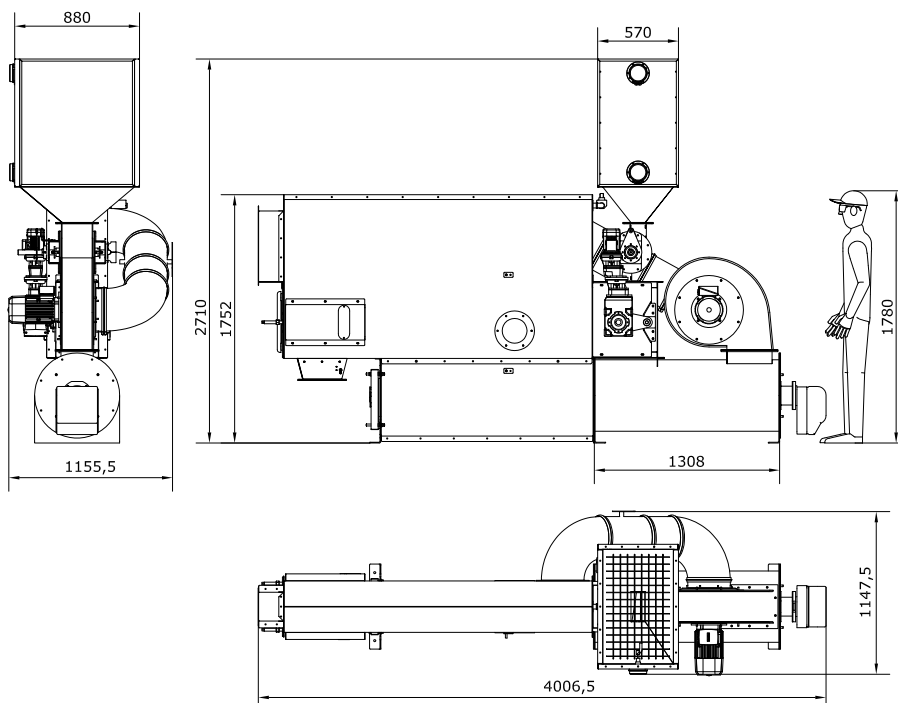
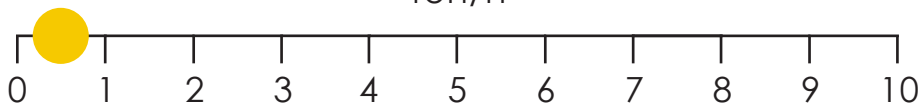


T5 roaster

ton/h

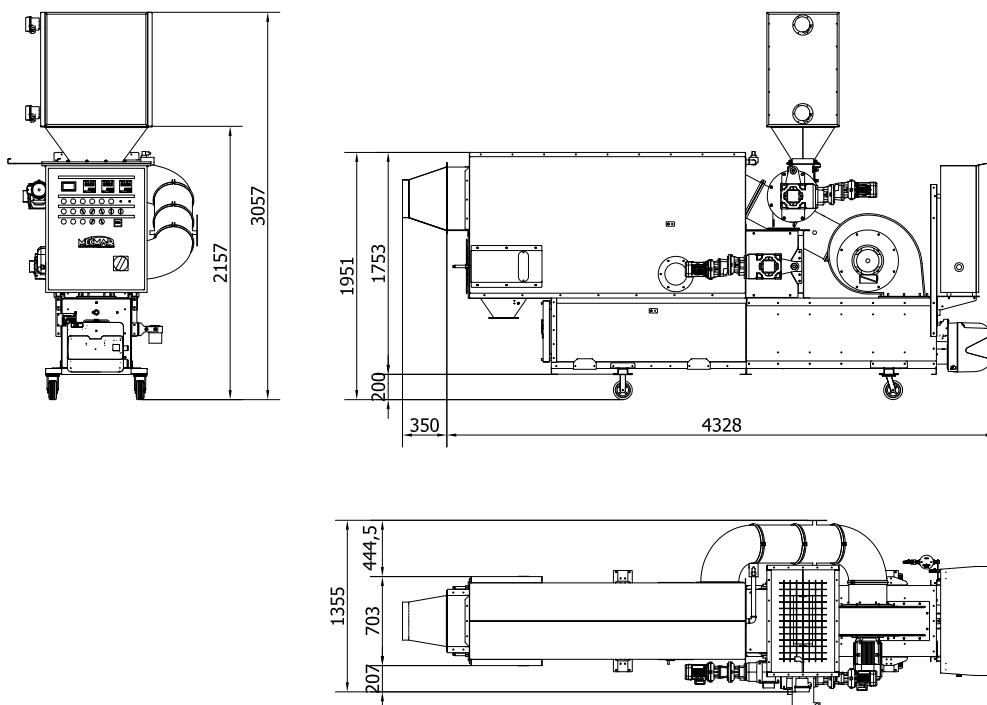
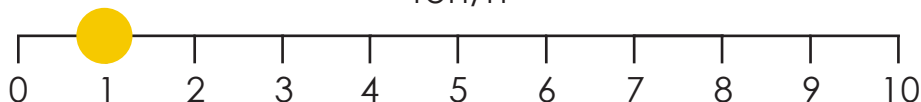


MODEL	[unit]	T5
Output	[ton/h]	0,4 - 0,6
Overall dimensions	[m]	1,2 x 4,3 x 2,9
Weight	[kg]	1060
Grain feeding system electrical motor	[kW]	0,12
Main fan electrical motor	[kW]	3,00
Burner fan electrical motor	[kW]	NA
Chain conveyor electrical motor	[kW]	0,18
Burner nominal power	[kW]	Max 395
Burner type	-	Gas - diesel - LPG
Heating mode	-	Direct firing (standard) / Heat exchanger (on demand)
Theoretical consumptions for diesel	[l _{diesel} /ton _{soya}]	19
Theoretical consumptions for gas	[m ³ _{gas} /ton _{soya}]	19
Theoretical consumptions for LPG	[l _{LPG} /ton _{soya}]	28
Optionals	-	Extra large loading hopper, external augers for filling/discharge, cooling unit, exhaust air cyclone

The output is given considering nominal conditions of whole, clean soybean at 13% moisture content for feeding the machine, 20°C ambient air temperature and 108°C product temperature after roasting section. Different process parameters will lead to different outputs. Please do not hesitate to contact the nearest MECMAR dealer for more information. Under our policy of continuous improvement, we reserve the rights to change the specifications provided in this brochure without prior notice.

T10 roaster

ton/h

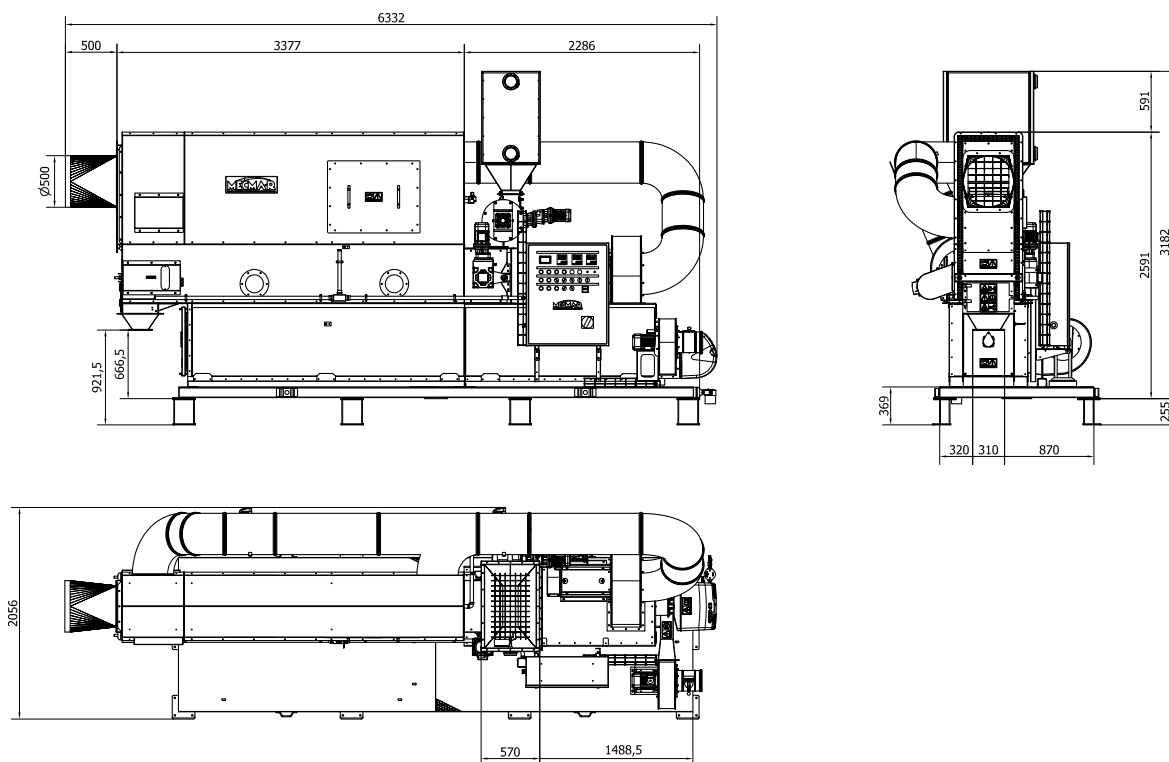
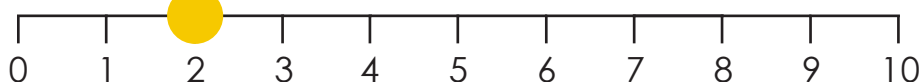


MODEL	[unit]	T10
Output	[ton/h]	0,8 - 1,2
Overall dimensions	[m]	1,3 x 4,3 x 3,0
Weight	[kg]	1260
Grain feeding system electrical motor	[kW]	0,12
Main fan electrical motor	[kW]	4,00
Burner fan electrical motor	[kW]	NA
Chain conveyor electrical motor	[kW]	0,18
Burner nominal power	[kW]	Max 395
Burner type	-	Gas - diesel - LPG
Heating mode	-	Direct firing (standard) / Heat exchanger (on demand)
Theoretical consumptions for diesel	[l _{diesel} /ton _{soya}]	19
Theoretical consumptions for gas	[m ³ _{gas} /ton _{soya}]	19
Theoretical consumptions for LPG	[l _{LPG} /ton _{soya}]	28
Optionals	-	Extra large loading hopper, external augers for filling/discharge, cooling unit, exhaust air cyclone

The output is given considering nominal conditions of whole, clean soybean at 13% moisture content for feeding the machine, 20°C ambient air temperature and 108°C product temperature after toasting section. Different process parameters will lead to different outputs. Please do not hesitate to contact the nearest MECMAR dealer for more information. Under our policy of continuous improvement, we reserve the rights to change the specifications provided in this brochure without prior notice.

T20 roaster

ton/h



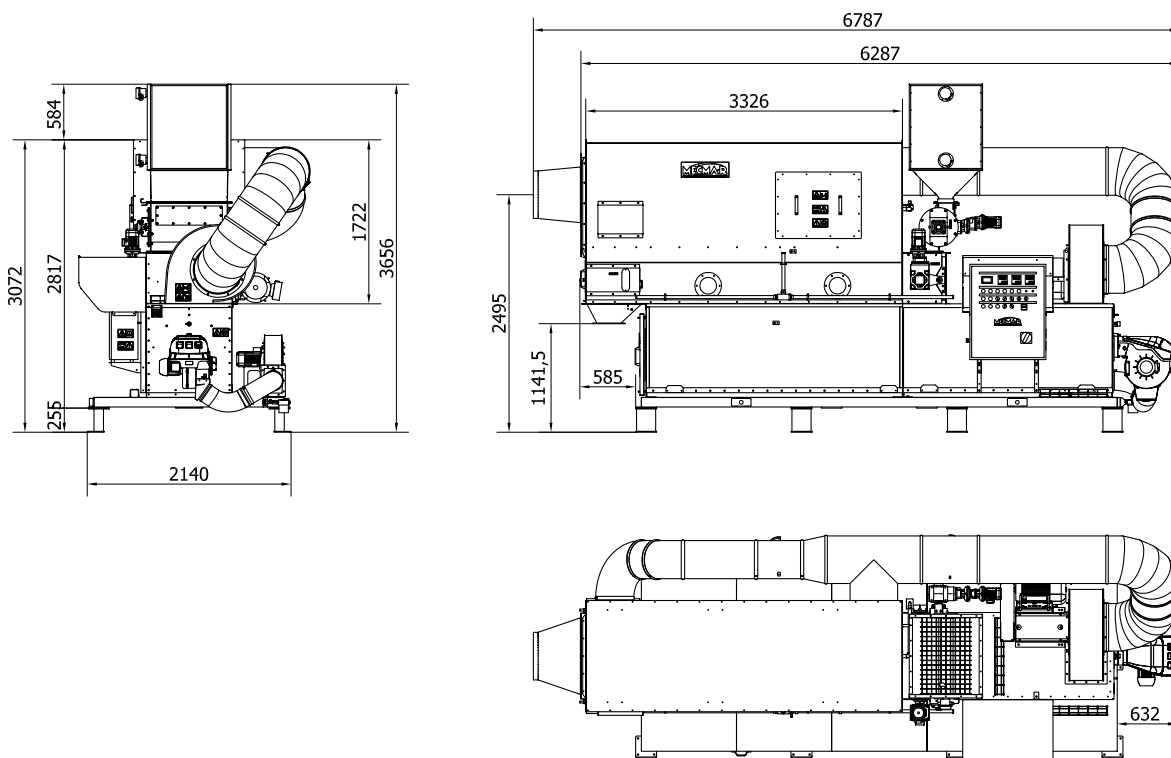
MODEL	[unit]	T20
Output	[ton/h]	1,5 - 2,5
Overall dimensions	[m]	2,1 x 6,5 x 3,4
Weight	[kg]	2400
Grain feeding system electrical motor	[kW]	0,18
Main fan electrical motor	[kW]	7,50
Burner fan electrical motor	[kW]	0,75
Chain conveyor electrical motor	[kW]	0,25
Burner nominal power	[kW]	Max 593
Burner type	-	Gas - diesel - LPG
Heating mode	-	Direct firing (standard) / Heat exchanger (on demand)
Theoretical consumptions for diesel	[l _{diesel} /ton _{soya}]	19
Theoretical consumptions for gas	[m ³ _{gas} /ton _{soya}]	19
Theoretical consumptions for LPG	[l _{LPG} /ton _{soya}]	28
Optionals	-	Extra large loading hopper, external augers for filling/discharge, cooling unit, exhaust air cyclone

The output is given considering nominal conditions of whole, clean soybean at 13% moisture content for feeding the machine, 20°C ambient air temperature and 108°C product temperature after toasting section. Different process parameters will lead to different outputs. Please do not hesitate to contact the nearest MECMAR dealer for more information. Under our policy of continuous improvement, we reserve the rights to change the specifications provided in this brochure without prior notice.

T50

T50 roaster

ton/h



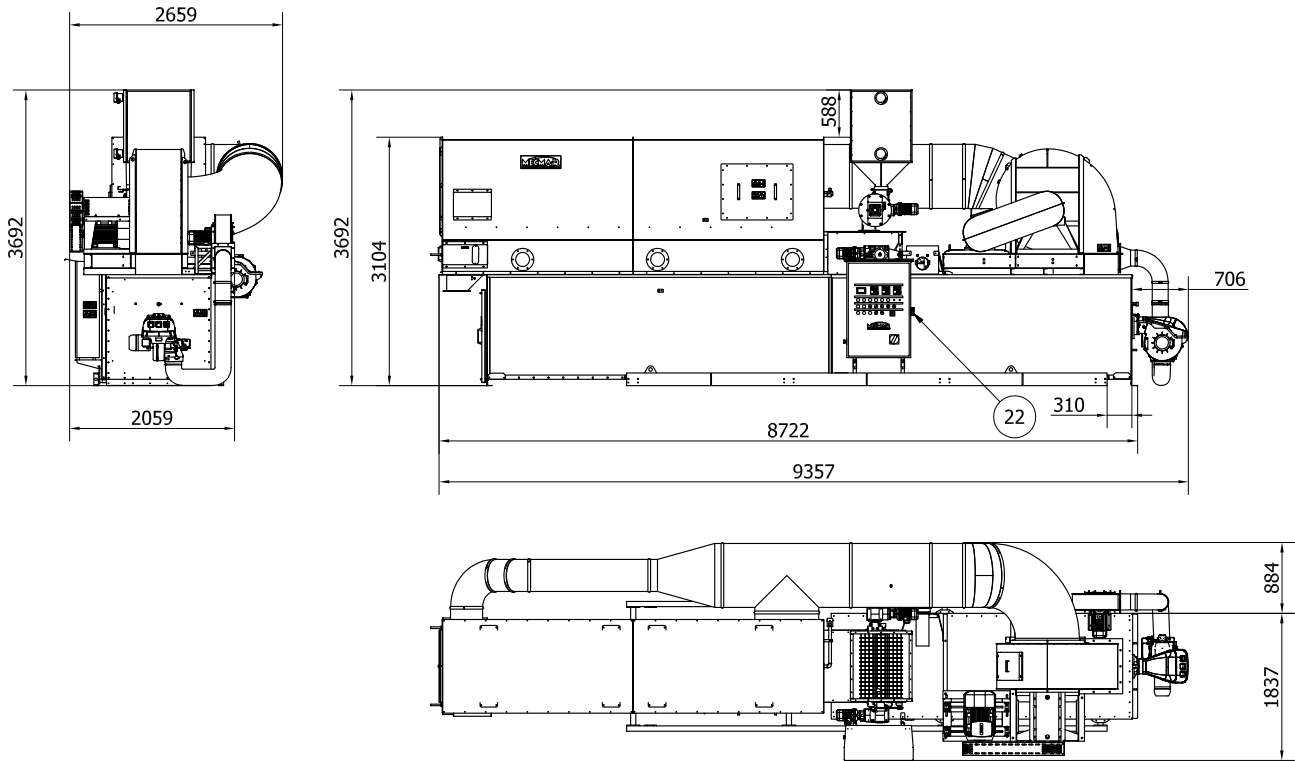
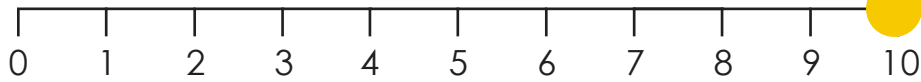
MODEL	[unit]	T50
Output	[ton/h]	4,0 - 6,0
Overall dimensions	[m]	2,5 x 7,2 x 3,8
Weight	[kg]	3340
Grain feeding system electrical motor	[kW]	0,18
Main fan electrical motor	[kW]	15,00
Burner fan electrical motor	[kW]	1,10
Chain conveyor electrical motor	[kW]	0,25
Burner nominal power	[kW]	Max 1186
Burner type	-	Gas - diesel - LPG
Heating mode	-	Direct firing (standard) / Heat exchanger (on demand)
Theoretical consumptions for diesel	[l _{diesel} /ton _{soya}]	19
Theoretical consumptions for gas	[m ³ _{gas} /ton _{soya}]	19
Theoretical consumptions for LPG	[l _{LPG} /ton _{soya}]	28
Optionals	-	Extra large loading hopper, external augers for filling/discharge, cooling unit, exhaust air cyclone

The output is given considering nominal conditions of whole, clean soybean at 13% moisture content for feeding the machine, 20°C ambient air temperature and 108°C product temperature after toasting section. Different process parameters will lead to different outputs. Please do not hesitate to contact the nearest MECMAR dealer for more information. Under our policy of continuous improvement, we reserve the rights to change the specifications provided in this brochure without prior notice.

T100

T100 roaster

ton/h



MODEL	[unit]	T100
Output	[ton/h]	8,0 - 10,0
Overall dimensions	[m]	2,7 x 9,4 x 3,7
Weight	[kg]	5600
Grain feeding system electrical motor	[kW]	0,37
Main fan electrical motor	[kW]	30,00
Burner fan electrical motor	[kW]	2,20
Chain conveyor electrical motor	[kW]	0,37
Burner nominal power	[kW]	Max 2443
Burner type	-	Gas - diesel - LPG
Heating mode	-	Direct firing (standard) / Heat exchanger (on demand)
Theoretical consumptions for diesel	[l _{diesel} /ton _{soya}]	19
Theoretical consumptions for gas	[m ³ _{gas} /ton _{soya}]	19
Theoretical consumptions for LPG	[l _{LPG} /ton _{soya}]	28
Optionals	-	Extra large loading hopper, external augers for filling/discharge, cooling unit, exhaust air cyclone

The output is given considering nominal conditions of whole, clean soybean at 13% moisture content for feeding the machine, 20°C ambient air temperature and 108°C product temperature after toasting section. Different process parameters will lead to different outputs. Please do not hesitate to contact the nearest MECMAR dealer for more information. Under our policy of continuous improvement, we reserve the rights to change the specifications provided in this brochure without prior notice.